

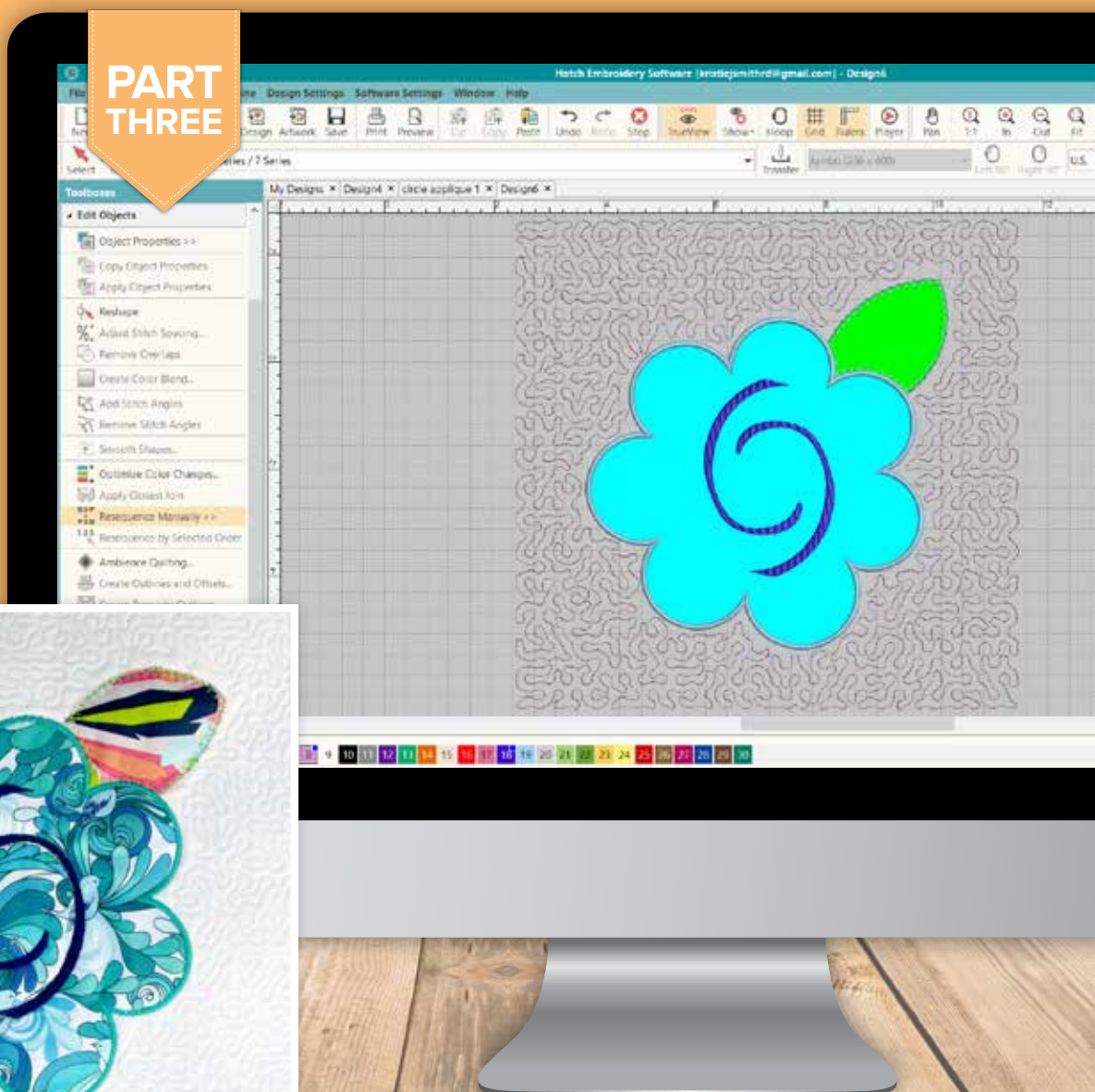
HATCHING A QUILT

Quilting project series with Kristie J Smith

APPLIQUÉ BLOCK



PART THREE



BASIC OBJECTIVES AND CREATIVE OPTIONS

1. The goal is to have fun and become more familiar with **Hatch Embroidery**.
2. The **quilt blocks** in this project are all created in Hatch Embroidery and stitched completely in the embroidery hoop. Block assembly is done on the sewing machine.
3. The basic concepts learned in the lessons are **stepping-stones** to your creativity. Consider using these techniques in combination to build new quilt blocks.
4. Don't be afraid to flex your creative muscles and put your own slant on the quilt. You are the designer and Hatch Embroidery software provides **endless opportunities** to express your **imagination**.
5. Blocks are **10"/25.4cm square (9.5"/24.13cm finished)** and there are lessons for **6 different blocks in the project** (9 blocks total with duplicates in the corners). **Finished quilt project as shown is 28.5"/72.39cm × 28.5"/72.39cm.**
Note: Block size can be easily adjusted based on the size of the hoop used and additional blocks can be added to make a larger quilted project.
6. Embroidery **machine tension** may need to be tweaked so that upper and lower threads are balanced evenly.

SUPPLIES FOR THE ENTIRE PROJECT

Hatch Embroidery Digitizer software

Fabric for front of blocks: (white) - 1.5 yards/1.4 meters recommended or adequate fabric to cover the hoop used

Fabric for back of blocks: (print) - 1.5 yards/1.4 meters recommended or adequate fabric to cover the hoop used

Fabric for appliqué and pieced blocks: ¼ yard/0.25 meters each of 2 prints

Batting: 1.5 yards recommended or adequate fabric to cover the hoop used (enough for 9 blocks)

Sashing fabric (Print): 1/3 yard / 0.3 meters

Binding fabric: ¼ yard/0.25 meters

Mesh-type cut-away stabilizer: 1 roll, width/height to cover selected hoop

Temporary adhesive spray

Assorted embroidery thread

OPTIONAL SUPPLIES

- Appliqué scissors for removing excess stabilizer/clipping around appliquéd fabrics
- Rotary cutter/mat and acrylic rulers (12"/30.48cm square and long ruler recommended)
- Masking tape (to better secure the backing of the blocks while stitching as backs are not hooped in most blocks)
- Invisible thread (used to top stitch sashing fabrics)
- Water-soluble stabilizer: 1-2 sheets for Trapunto block

PART 3

Appliqué Block

Appliqué is a French term defined as ornamentally attaching a fabric to a base to create a design. From fashion, to home décor, to quilting, appliqué can be found abundantly in stores, magazines, media, and everyday life. Hatch Embroidery provides a toolbox of options to **easily create precise appliqués** with just a few steps. This block is an easy tutorial to teach you the nuts and bolts of appliqué with Hatch Embroidery.



SUPPLIES FOR THIS BLOCK

Circle embellishment design

Flower artwork

Front fabric: Minimal 12" square (to be trimmed after embroidery)

Backing fabric: Minimal 12" square (to be trimmed after embroidery)

Batting-1 piece large enough to cover the hoop

Applique fabric: 6" square for flower, 4" square for leaf

Stabilizer- 2 sheets to cover the hoop

Assorted Embroidery Thread

Temporary Spray Adhesive

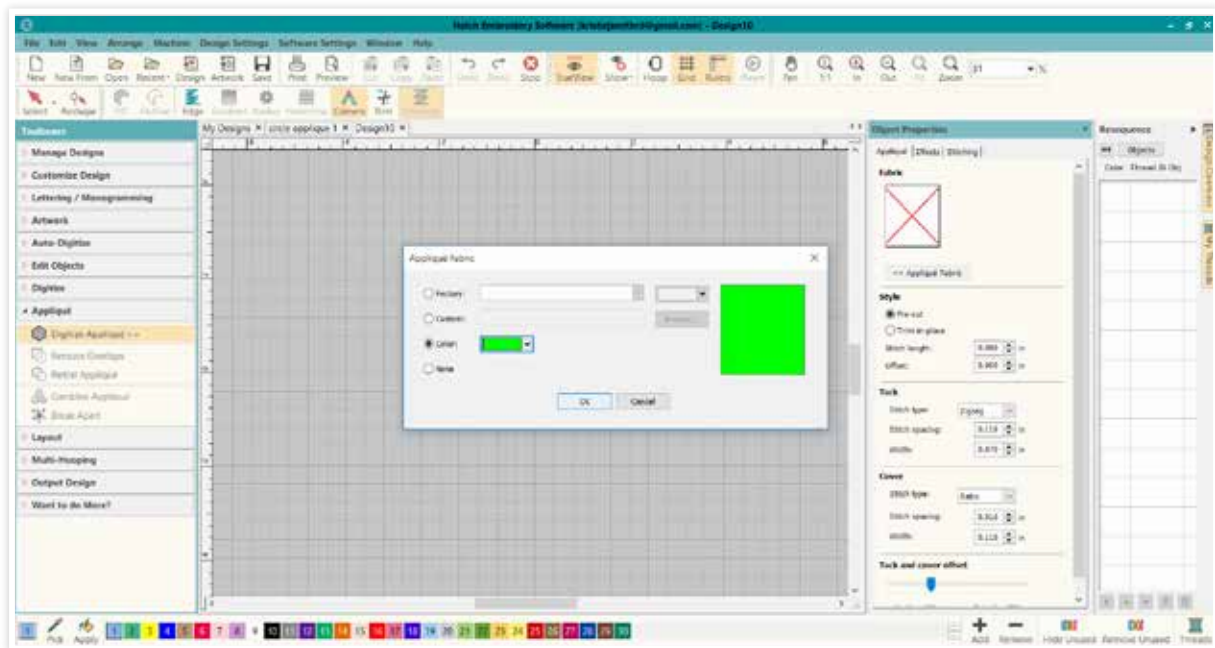
Appliqué scissors (optional)



Drawing the Leaf

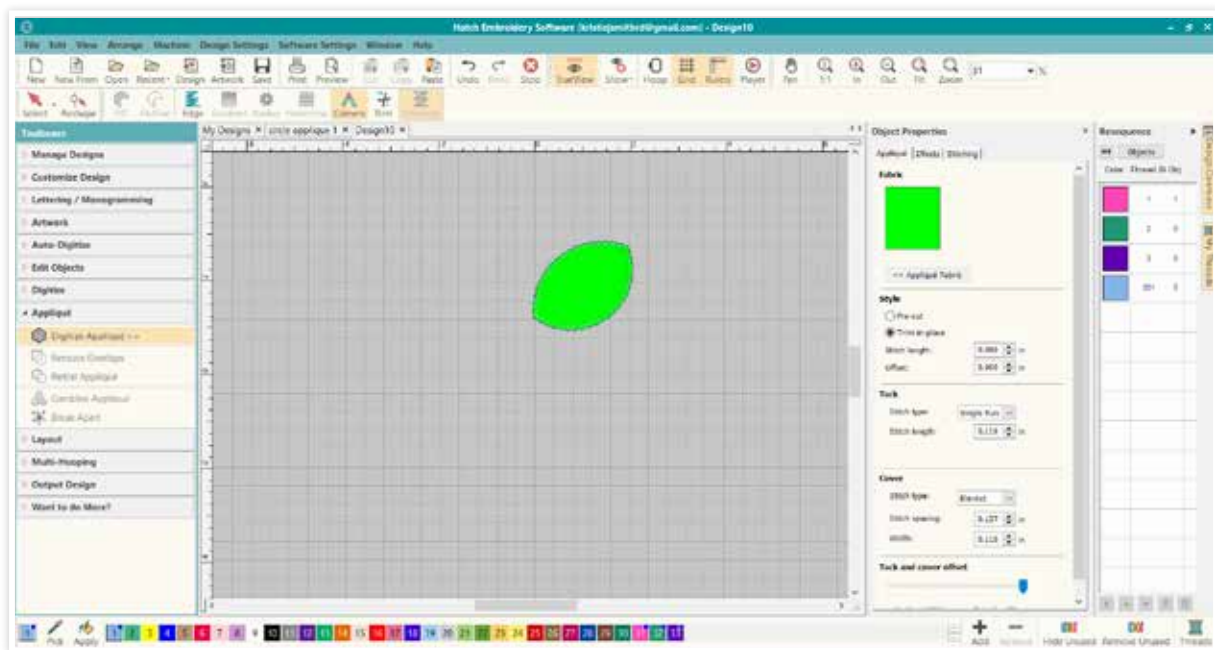
Activate the grid by left-clicking on the **Grid** tool on the top toolbar. Left-click on the **Appliqué** Toolbox and left-click on **Digitize Appliqué** tool. The **Appliqué Object Properties** box will open. Left-click on **Appliqué Fabric**. The **Appliqué Fabric** box will open. Left-click the drop-down box beside color and select a green color chip. Left-click OK to set the color/fabric visual.

Note: this is just for visual, any color can be chosen.



In **Appliqué Object Properties** under the **Style** section, left-click on the circle beside **Trim-in-place**. This means you will trim the appliqué fabric after it is tacked down instead of having pre-cut pieces of appliqué fabric. Under the **Tack** section, left-click on the arrow beside stitch type and select **Single Run**. Under the **Cover** section, left-click on the arrow beside stitch type and select **Blanket**.

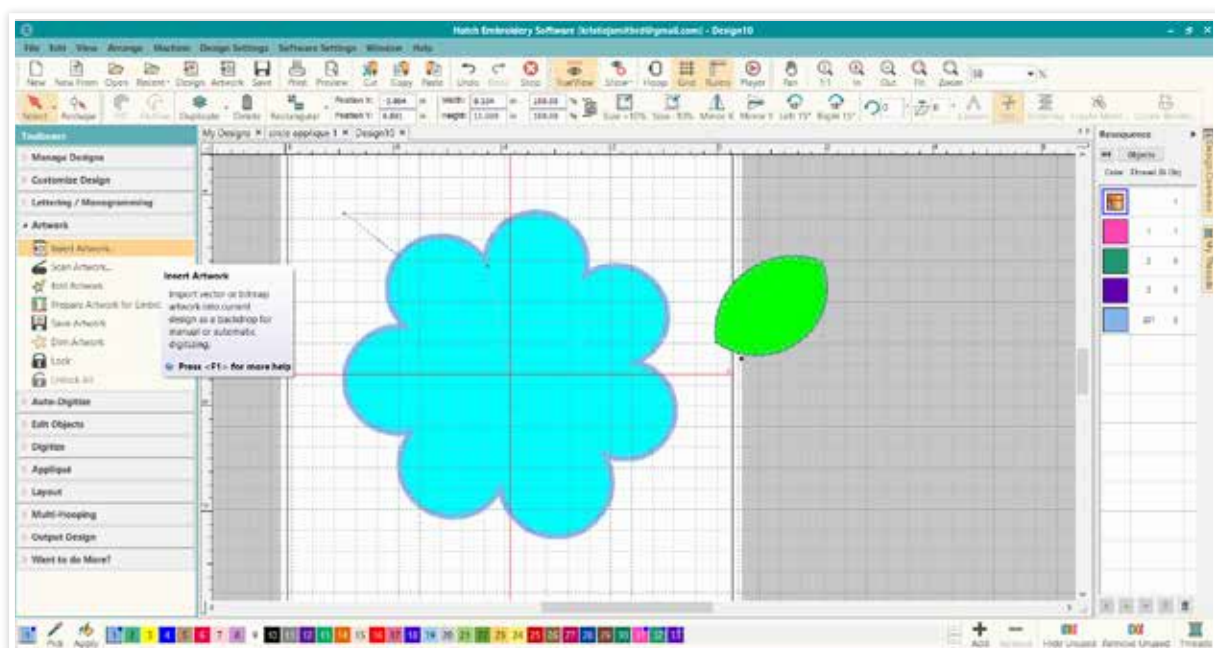
To draw the appliqué object, use your mouse and cursor. Left-click to create end points and right-click to create curves. Start with a left-click anywhere on the screen, move the cursor about 4 grid squares up and 1.5 over and right-click, then move the cursor 4 squares over and 2 squares up and left-click for a point, move cursor down 4 squares and 1 square to the left and right-click for a curve, hit **Enter** on your keyboard and the design object should close. It doesn't have to be perfect or just like my sample; the purpose is to teach you to digitize organically.



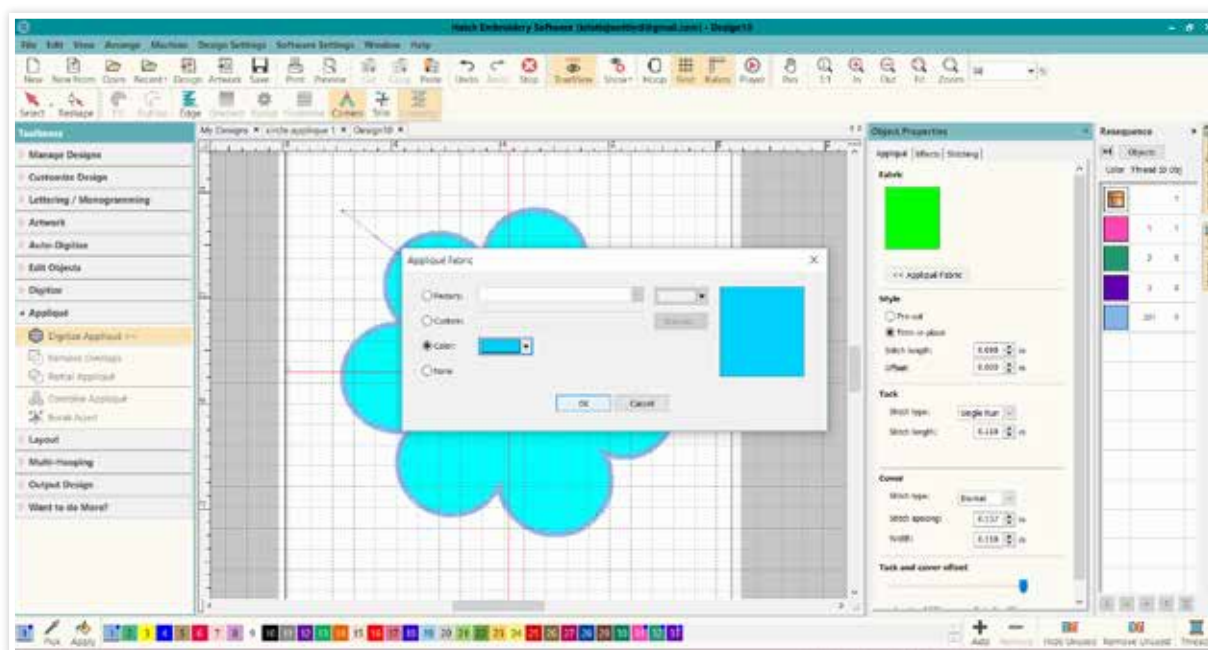
Note: If you open the **Resequencer** docker, you will notice 4 color chips: the 1st color is a placement line for the fabric, 2nd and 3rd colors are tack stitches for the appliqué fabric and 4th color is the cover-stitch for the applique (the blanket stitch in the sample).

Drawing the Flower

Left-click on the **Artwork** toolbox; left-click on the **Insert Artwork** tool.
Open the “Flower Drawing” artwork.

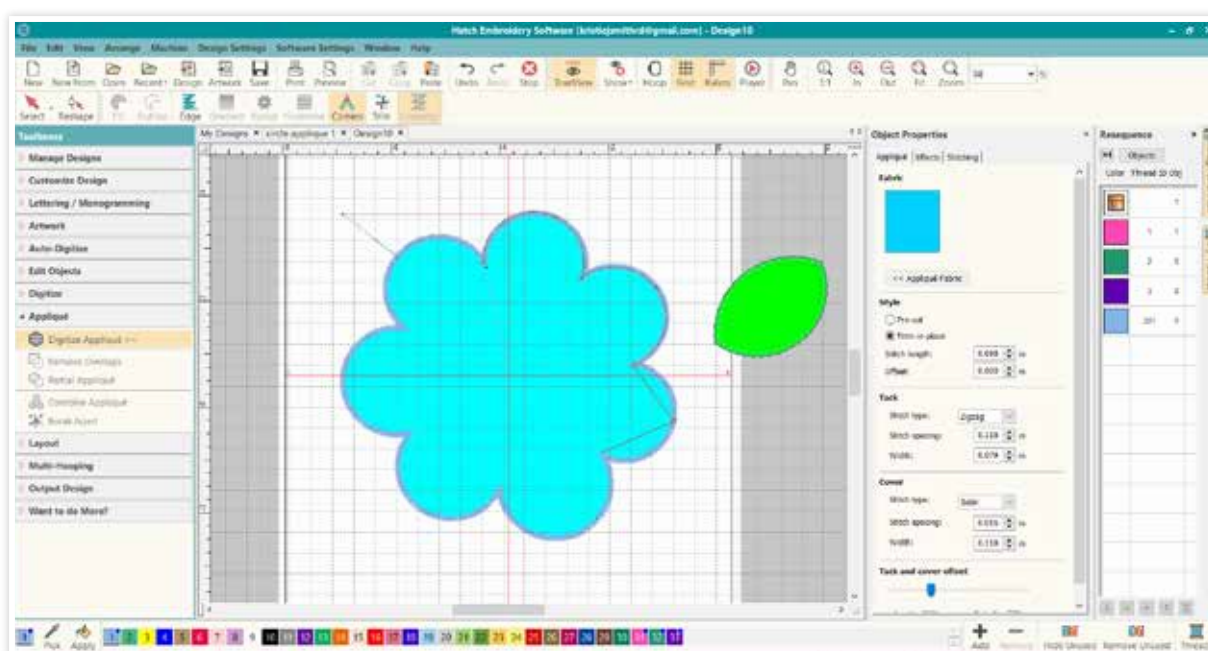


Left-click on the **Appliqué** toolbox and left-click on the **Digitize Appliqué** tool. The **Appliqué Object Properties** box will open. Left-click on **Appliqué Fabric**. The **Appliqué Fabric** box will open. Left-click on the drop-down box beside **Color** and select a light blue color chip. Remember: this is just for visual, so any color can be selected. Left-click OK.

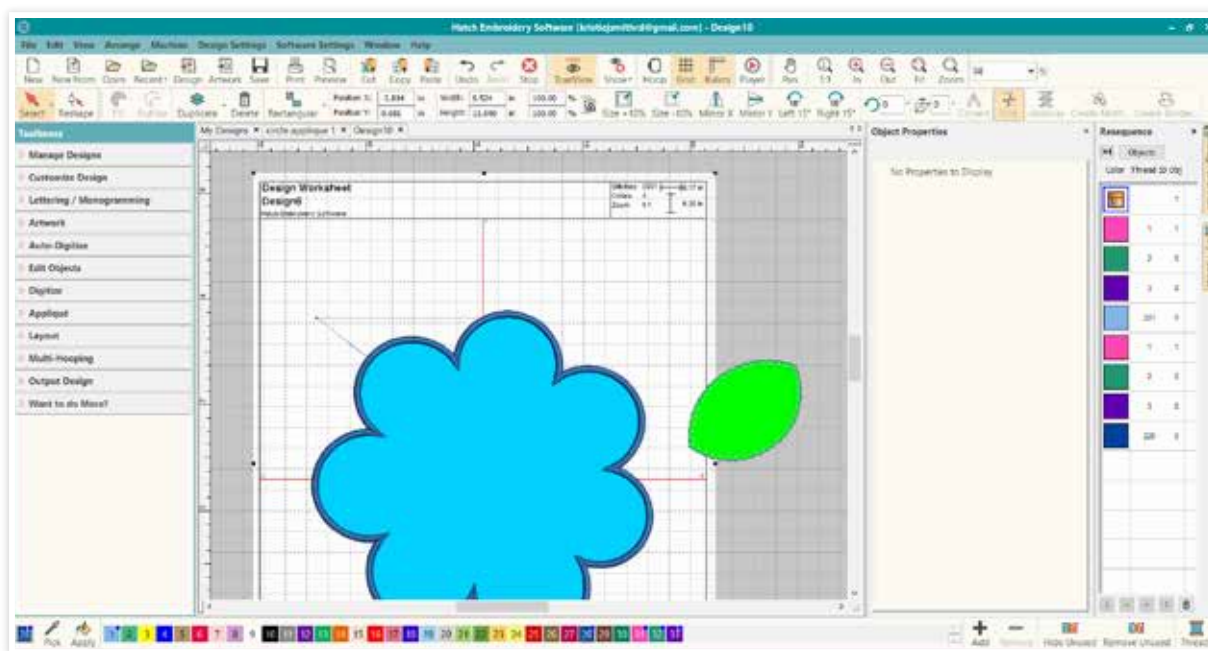


In **Appliqué Object Properties** under the **Style** section, left-click on the circle beside **Trim-in-place**. Under the **Tack** section, left-click on the arrow beside stitch type and select **Zigzag**. Under the **Cover** section, left-click on the arrow beside **Stitch type** and select **Satin**.

To draw the appliqué object, use your mouse and cursor as in the “leaf” steps above to trace around the flower artwork; left-click to create endpoints/corners and right-click to create curves. Left-click on inward point, bring the cursor to top of curve and right-click, bring cursor to next inward point and left-click. Continue around the flower. Remember that flowers in nature are not uniform. If your flower is not perfect, it may actually look more natural.

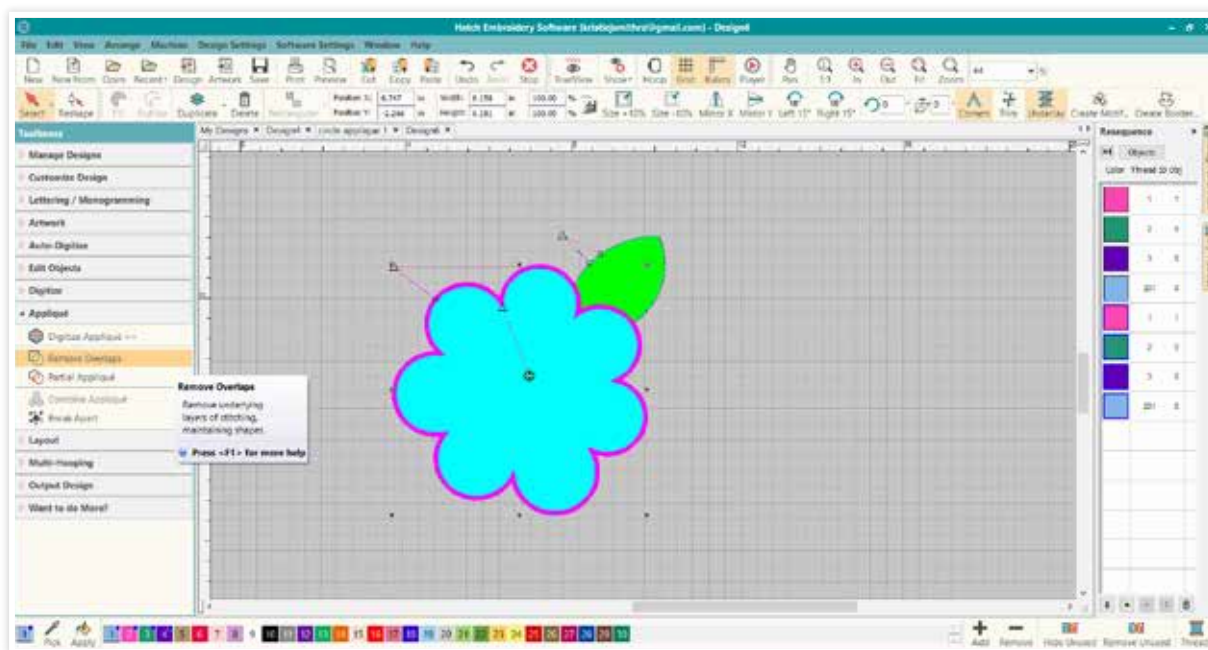


Press **Esc** on your keyboard to deactivate the tool. Left-click on the **Select** tool and click the background artwork to select; press the **Delete** key on your keyboard to delete the artwork. Select the flower design and position it over the leaf slightly.

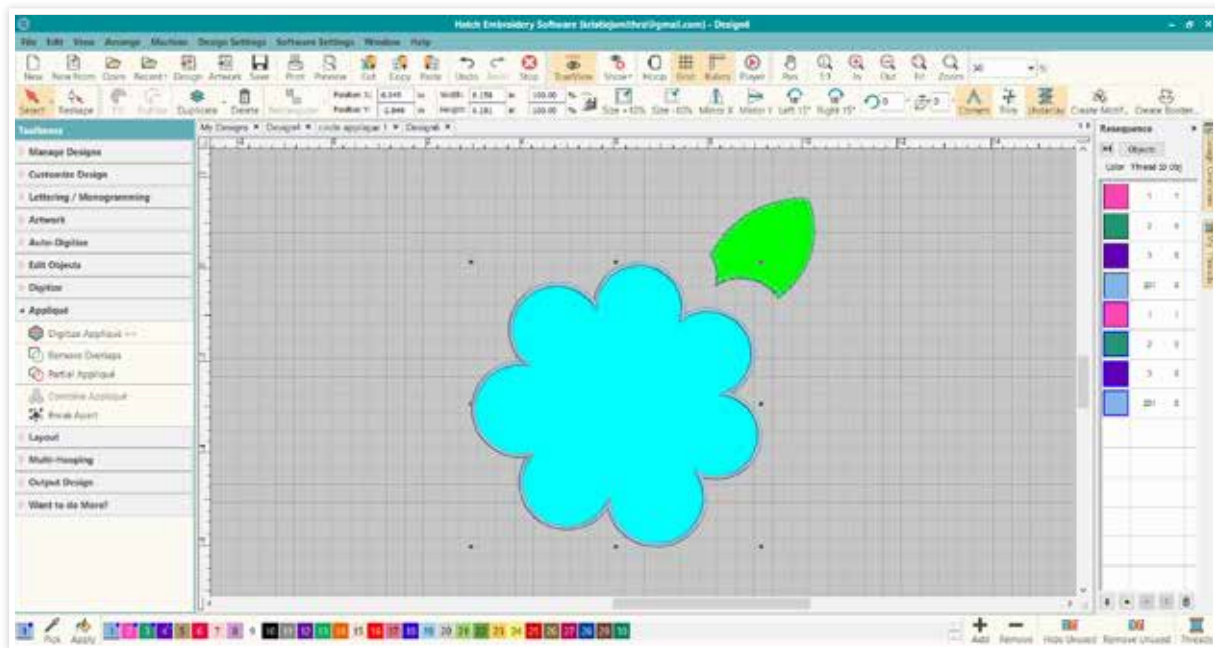


Removing Overlaps

Our two appliquéd objects overlap and the fabric layers could get thick, so let's remove the overlapped stitches. Left-click on **Select** and then on the flower design to highlight the flower design only. Left-click to open the **Appliqué** toolbox and left-click on the **Remove Overlaps** tool.

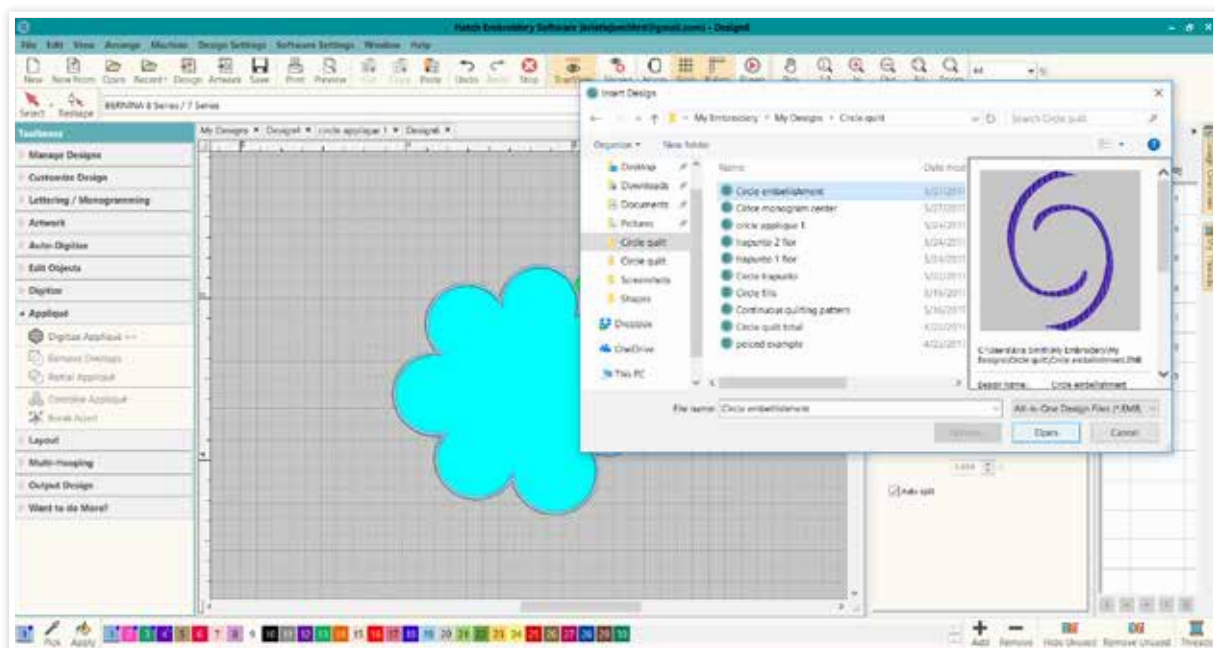


Note: to check, move the flower out of position and now look at the new shape of the leaf. To reposition, left-click on the **Undo** tool.

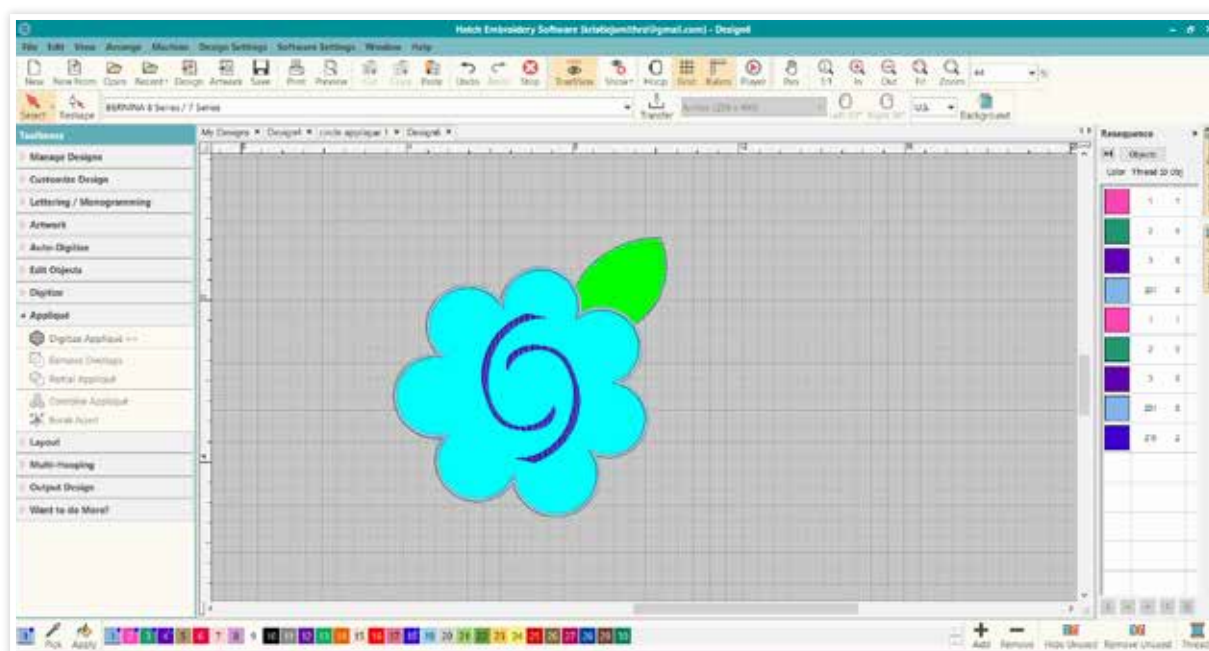


Adding Center Design

Left-click on **File**, left-click on **Insert design**, locate the “Circle Embellishment” design, and click OK to insert the design. This design was included in the zip file you downloaded for these instructions.

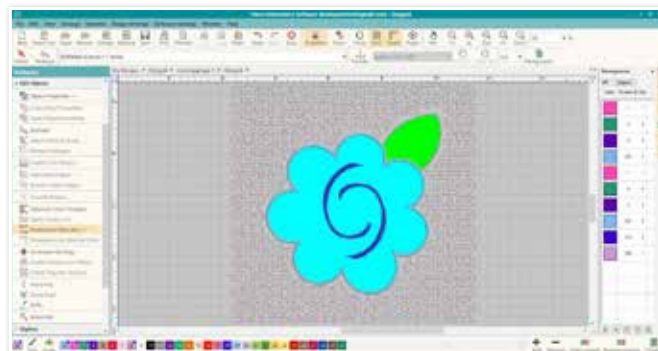
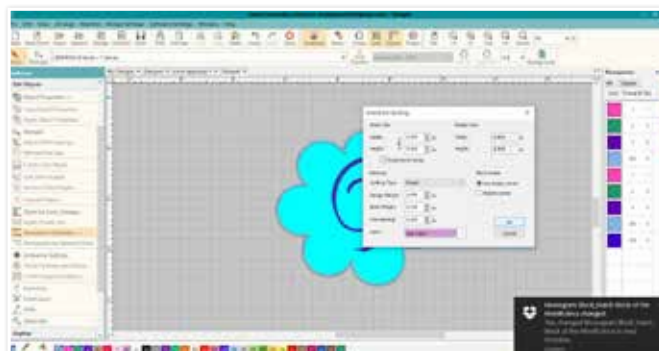


Position the “Circle Embellishment” design into the center of your flower.



Ambience Quilting

Left-click on the **Edit Options** toolbox and left-click on the **Ambience Quilting** tool. The **Ambience Quilting** box will open. Left-click on **Proportional sizing** and enter 9.5” (242 mm) into the **Width** box (the height measurement should be equivalent). In the **Quilting Type** dropdown box, select **Stipple**. In the **Color** dropdown box, choose a color other than the color you used in the design. Left-click OK and the quilting should surround your design within a 9.5” block.



Once the block is created as desired, left-click on the **Output Design** toolbox. Left-click on the **Auto Start and Stop** tool and set start and end positions by checking the boxes beside “First stitch of design” and “Last stitch of design”; left-click OK. Save the design and output the design to your machine.

Stitching the Block

Layer the front fabric, batting, and 2 pieces of stabilizer to create a layered sandwich (if desired, use temporary spray adhesive between layers). Hoop the layered sandwich into an embroidery hoop large enough to accommodate the block design.

Note: The backing fabric is NOT added yet.

Stitch the first color and the machine will stop; layer the appliqué fabric to completely cover the first design element stitched.



The second design element to stitch will be a tack-stitch for the fabric. After the machine stops, cut away excess fabric close to the stitching without cutting into the stitching.

Note: I use curved applique scissors to easily trim close to the stitching, but any scissors will work to trim.

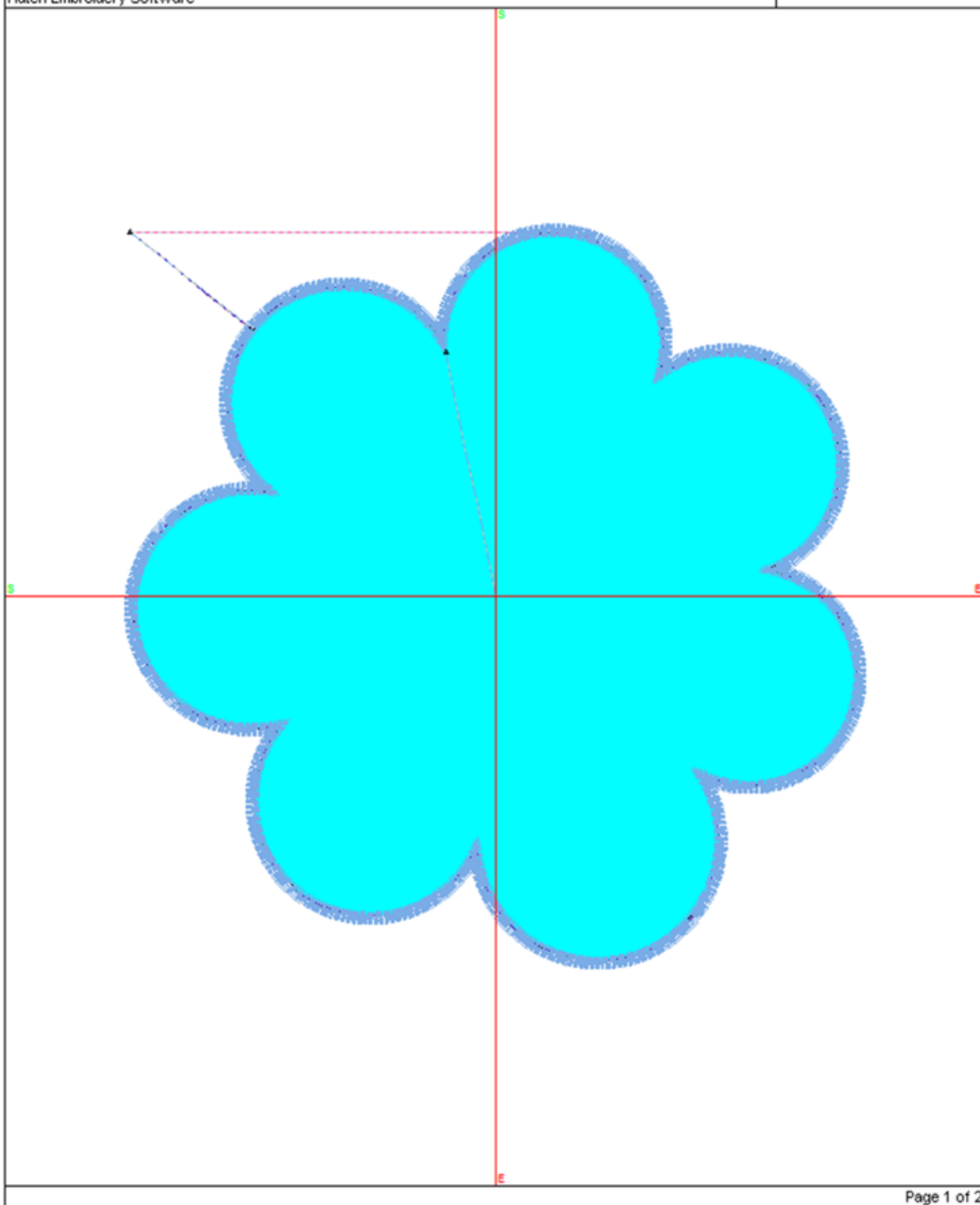


Continue stitching until the design element is continued. Repeat this process until all appliqué pieces are completed.

After stitching the circle embellishment portion of the design, stop the machine. Remove the hoop (do NOT remove the fabric sandwich from the hoop); spray the back of layered sandwich with temporary spray adhesive and place the backing fabric wrong-side up to the back of the layered sandwich. Place the hoop back on the machine and continue stitching the design. Remove the layered sandwich from the machine and trim to a 10" square.



WE HOPE YOU ENJOYED PART 3 OF 'HATCHING' A QUILT. PART 4 WILL BE COMING SOON!



NOTES



Wilcom International Pty Ltd
L3, 1-9 Glebe Point Rd, Glebe NSW 2037, Australia
Email: hatchsales@wilcom.com

